



Enterprise Reporting Solution

# Argos 6.12 Release Guide

*Product version 6.12*

*Last updated 9/19/2024*

# Trademark, Publishing Statement, and Copyright Notice

---

© 1998-2024 Evisions. All rights reserved.

This software and related documentation are provided under a license agreement containing restrictions on use and disclosure and are protected by intellectual property laws. No part of this document may be reproduced, stored in or introduced into a retrieval system, or transmitted in any form or by any means (electronic, mechanical, photocopying, recording, or otherwise), or for any purpose, without the express written permission of Evisions.

The information contained herein is subject to change without notice and is not warranted to be error-free. Product features referenced herein for a period of time may not match product contents. Evisions does not warrant that the functions contained in the software will meet your requirements or that the operation of the software will be uninterrupted or error free. Evisions reserves the right to make changes and/or improvements in the software without notice at any time.

This software and documentation may provide access to or information on content, products, and services from third parties. Evisions and its affiliates are not responsible for and expressly disclaim all warranties of any kind with respect to third-party content, products, and services. Evisions and its affiliates will not be responsible for any loss, costs, or damages incurred due to your access to or use of third-party content, products, or services. Evisions does not endorse the content or developer of any products or web sites mentioned.

All information in this guide is designed for instructional purposes only. Evisions makes no guarantees regarding the accuracy or performance of any techniques used in this guide. Software configurations and environments may vary, and some techniques used in this guide may not operate efficiently under all configurations. This guide may contain examples of various technologies or products, which are the sole property and responsibility of their creators.

Trademarks are the property of the respective owners for any products mentioned herein.

# Table of Contents

---

- What's New in Argos 6.12?** ..... **4**
  - MAPS and Argos Updates ..... 4
    - Product versions ..... 4
  - Installation ..... 5
    - 1. Prepare test environment and ensure current backup ..... 5
    - 2. Check for updates ..... 5
    - 3. Allow update process to complete ..... 5
    - 4. Verify the latest version is installed ..... 5
- Argos 6.12 Release Notes** ..... **6**
- Getting Help** ..... **8**
  - Can't find what you're looking for? ..... 8

# What's New in Argos 6.12?

---

Evisions is pleased to announce the release of Argos version 6.12, which includes the following changes:

## Argos Enhancements:

- When only one database connection exists, it will now be selected automatically.
- Updated the Argos DataBlock Connector to support DataBlocks run in Tableau version 2024.1 and higher.
- Added the Prompt for Data section to multi-column list box variable design dialogs in the Web Viewer to allow requests for .csv file uploads.

## Argos Resolved Issues:

- Various resolved issues.

## MAPS Enhancements:

- Users who authenticate via SAML SSO may now bypass additional login screens.
- Improved support for REST Connector Advanced APIs.
- 32-bit and 64-bit applications may now be accessed on the same machine without risk of file overwrite.
- Improvements to image scaling.
- MAPS printers may now receive IntelCheck output.
- Additional enhancements.

## MAPS Resolved Issues:

- Web Viewer queries that were connected to a SQL Server ADO or a Postgres ADO data connection were failing.
- Additional resolved issues.

We appreciate the feedback received from all of our users. Our products would not be what they are today without your continued support. If you have any comments or suggestions, please do not hesitate to [open a HelpDesk ticket](#) and let us know.

## MAPS and Argos Updates

---

Some of the changes in this release require an update to MAPS as well as to Argos. We recommend upgrading both products to the latest versions concurrently.

### Product versions

The latest versions of MAPS and Argos included in this release are:

- Argos mapplet 6.12.0.2135 / Argos client 6.12.0.2552 / Web Viewer 6.12.0.9
- MAPS service 6.12.0.2734 / MAPS Config 6.12.0.1527 / eLauncher 6.12.0.1 / EAL 1.2.0.35

## Installation

---

### 1. Prepare test environment and ensure current backup

We highly recommend installing updates in a test environment before applying them to your production environment. You should make sure that a current backup is available in case of any unforeseen issues. To create a full backup of your MAPS environment, go to the **Server -> Backups** screen in MAPS and click **Backup Now**.

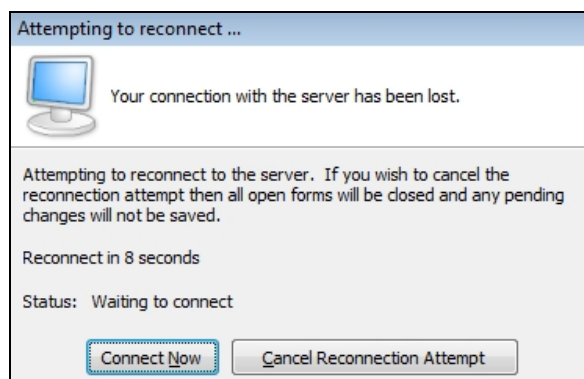
### 2. Check for updates

Click the **Check for Updates** button in the MAPS Config application to view available updates.

It is possible to apply updates when users are on the system; however, to avoid the possibility of losing unsaved work we recommend applying updates during off hours.

### 3. Allow update process to complete

When applying updates to the MAPS service you will be temporarily disconnected from the server:



The update process may take a few minutes to complete. **Do NOT cancel the reconnection attempt or manually restart the server.** You will automatically be reconnected to the server once the update has been applied.

### 4. Verify the latest version is installed

To ensure that you are on the most current version, continue clicking the **Check for Updates** button and applying the updates until no new updates are available.

## Please Provide Us with Your Feedback!

---

As always, we welcome any [feedback or suggestions](#) you may have. We very much appreciate your thoughts and suggestions, so please keep the great ideas coming!

# Argos 6.12 Release Notes

Argos Mapplet 6.12.0.2135 / Argos Client 6.12.0.2552 / Web Viewer 6.12.0.9  
MAPS Service 6.12.0.2734 / MAPS Config 6.12.0.1527 / eLauncher 6.12.0.1

## Argos

### Enhancements

Area	Description	Issue number
Data Connections	If a user only has access to one database connection in the Argos client or Argos Web Viewer, it will now be automatically selected for them.	AR-8033
Data Connections	Updated the Argos DataBlock Connector to support DataBlocks run in Tableau version 2024.1 and higher.	AR-7930
Queries	Added the Prompt for Data option to multi-column list box variable design dialogs in the Argos Web Viewer to allow .csv files to be requested by Designers and uploaded by users in order to supplement queries.	AR-7967

### Resolved Issues

Area	Description	Issue number
Accessibility	Individual items within a multi-column list box may now be selected via keyboard.	AR-4960
ADO	Banded reports were producing incorrect results when # was used in the ones column.	AR-8039

## Enhancements

Area	Description	Issue number
Accessibility	Added keyboard accessibility support throughout various areas within MAPS Config.	MAPS-2142
API	Improved support for REST Connector Advanced APIs.	MAPS-3642
API	The Connection, Server, and User system variables will now use default values when running queries.	MAPS-3691
Applications	The 32-bit and 64-bit application versions may now be accessed on the same machine without any files needing to be overwritten in the version folder.	MAPS-2455
Authentication	Added the MAPS-Session-Id custom header to query parameters.	MAPS-3647
Config	Improved DPI image scaling in MAPS Config.	MAPS-3444
Log Files	Removed XML encoding for SAML assertion in MAPS logs to improve readability.	MAPS-3655
SAML	Authenticating via SAML SSO now forgoes additional login requirements for the eLauncher and Argos Web Viewer.	MAPS-2399
SAML	SAML SSO users who do not have an email address saved in their MAPS user profile may now retrieve the email address saved in their SAML server via the SAML Optional Fields page.	MAPS-3565

## Resolved Issues

Area	Description	Issue number
ADO Connections	Queries in the Argos Web Viewer that were connected to a SQL Server ADO or Postgres ADO data connection were failing with a generic error code when using certain formatting.	MAPS-3668
Data Connections	Data queried while using a Native Oracle data connection was failing to return when the Default Data Type set to "Narrow".	MAPS-3659
Log Files	Unauthenticated sessions that were disconnected by MAPS were being logged in the Argos Mapplet.	MAPS-3333
SSO	SAML servers were failing to respond to metadata URLs that were generated with certain tags.	MAPS-3577
SSO	Metadata was failing to return when authenticating via Single Sign-On on an Okta server.	MAPS-3575

# Getting Help

---

For information on using the software, please refer to the product Help, which contains detailed information on all aspects of the product.

If you are having problems with the installation or configuration, you can search our [support site](#), which includes a knowledge base of common issues. If you are unable to find the solution, submit a HelpDesk request with a detailed explanation of the problem you are experiencing.

Please do not hesitate to contact the Evisions HelpDesk if any questions or problems arise. We are here to help you and want to ensure your success.

## Can't find what you're looking for?

---

We would love to make our documentation better! If you have a moment to let us know what we missed or how we can make the help more useful, please email us at [TechDocs@evisions.com](mailto:TechDocs@evisions.com).